

**PLANNING COMMITTEE  
ADDENDUM  
Item H Presentation – Henge Way,  
Portslade**

**2.00PM, WEDNESDAY, 7 JULY 2021**

**COUNCIL CHAMBER, HOVE TOWN HALL**

Agendas and minutes are published on the council's website [www.brighton-hove.gov.uk](http://www.brighton-hove.gov.uk). Agendas are available to view five working days prior to the meeting date.

Electronic agendas can also be accessed through our meetings app available through [ModernGov: iOS/Windows/Android](#)

This agenda and all accompanying reports are printed on recycled paper

# ADDENDUM

ITEM		Page
H	BH2021/01453 - Henge Way, Portslade - Removal or Variation of Condition	1 - 14

# Henge Way, Portslade

**BH2021/01453**



**Brighton & Hove  
City Council**

# Application Description

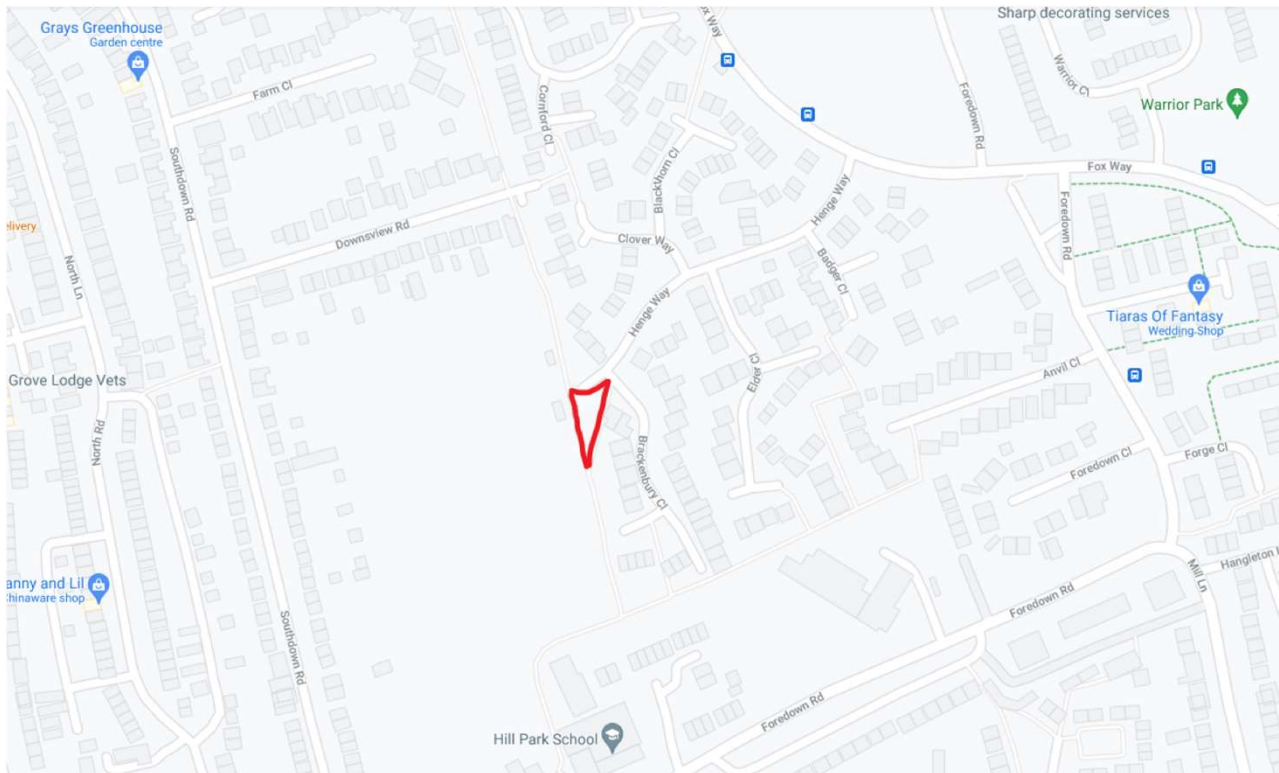
---

- Variation of conditions from BH2019/01409, to allow for different materials to the roof and windows.



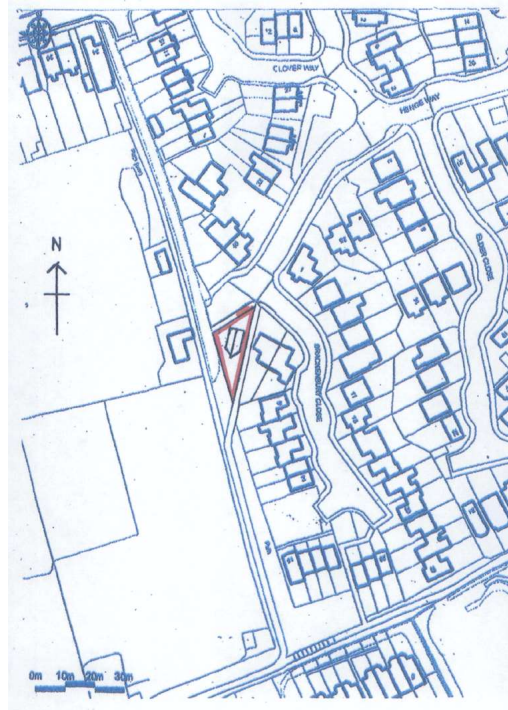
Brighton & Hove  
City Council

# Map of application site



# Location Plan

---



1190/L/1 (BH2019/01409)



# Aerial photo of site

---



Brighton & Hove  
City Council

# 3D Aerial photo of site

---



Brighton & Hove  
City Council



# Street photo(s) of site

---

Prior to approval of BH2019/01409



After commencement of construction (10/6/21)



Brighton & Hove  
City Council

# Photos of dwellings nearby

---

Note range of roof materials in vicinity:

- 30-32, and 38-40 Henge Way with grey tiles in foreground (immediately opposite application site).
- 26-28, and 34-36 Henge Way with red tiles to the left, and centre further from camera.



# Photos of dwellings nearby

---

Note range of roof materials in vicinity:

3, 4, 5, 11 Brackenbury Close with white window frames

2, 7, 9 Brackenbury Close with brown window frames

2-4 Brackenbury Close (on the right – non matching window colours) immediate adjacent to the application site



Brighton & Hove  
City Council

# Approved and proposed Roof Tiles

---

Approved

Roof Tile - Plain concrete - Dark Red

<https://www.marley.co.uk/products/concrete-tiles/concrete-plain-tile>

## PLAIN

The authentic single camber design of the Marley concrete plain tile gives it a look to match its outstanding versatility.



Proposed

Roof Tile - Marley Moder, Smooth Grey

<https://www.marley.co.uk/products/concrete-tiles/modern>

## MODERN

A flat, smooth, single lap interlocking design, whose appearance is enhanced by the required broken bond laying pattern.



# Approved and proposed Window Frames

---

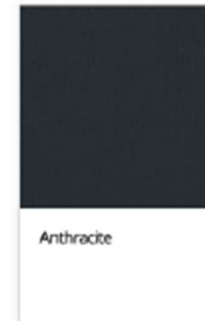
Approved

Windows - Stained Timber Windows



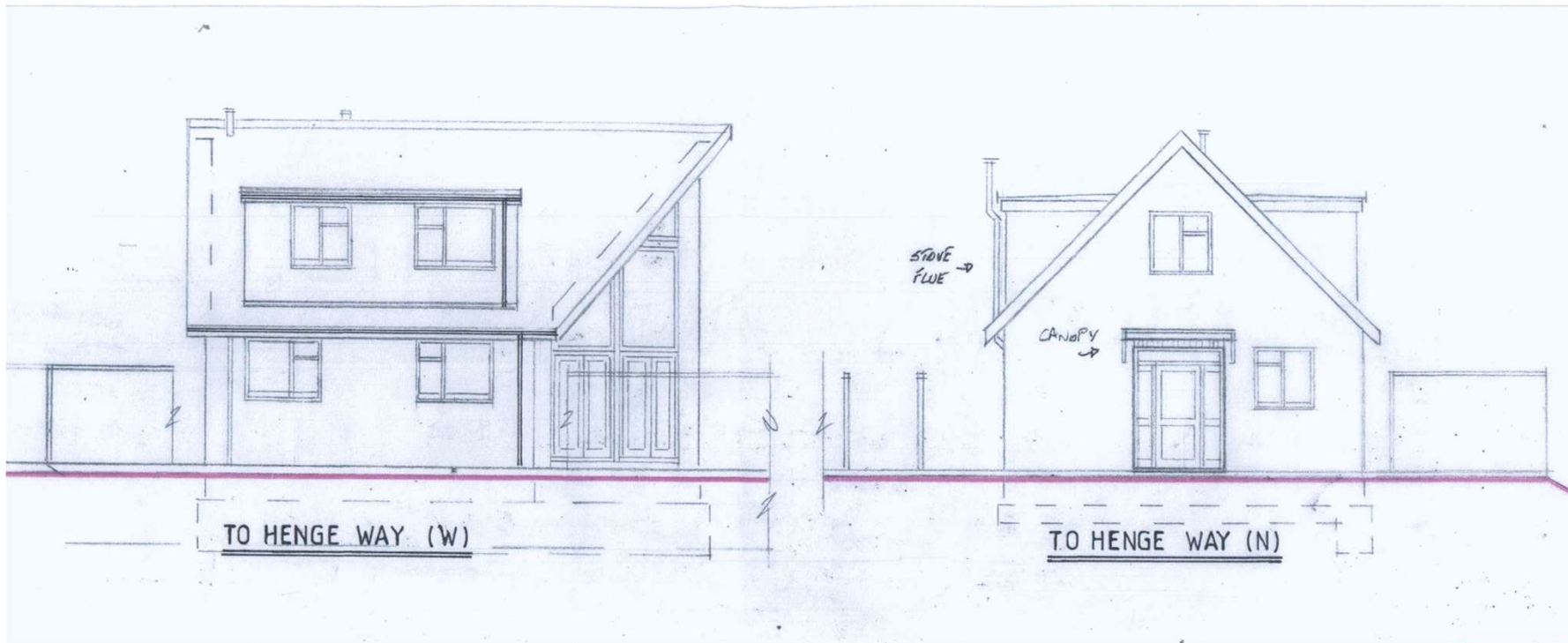
Proposed

Windows - Anthracite Grey UPVC windows and doors



Brighton & Hove  
City Council

# Approved dwelling (BH2019/01409)



Brighton & Hove  
City Council

# Conclusion and Planning Balance

- Proposed variation of materials would not be out of character with the building or surrounding area.



Brighton & Hove  
City Council

